



DIRECT SEEDING PROJECT

Partnership Project with Murrumbidgee CMA













LOW INPUT IRRIGATED PERENNIAL FORAGE SYSTEMS

Project funded by Murrumbidgee CMA

27 Oct 2008







145.13° 145.13° 145.14° 15 145.16° 145.17° 145.18° 145.18° 145.18° 2 145.21° 145.22° 145.23° 145.23° 145.24° 25 145.26°


Boxthorn Survey

BIODIVERSITY IN BLACK BOX WOODLANDS

BOXTHORN MAPPING PROJECT

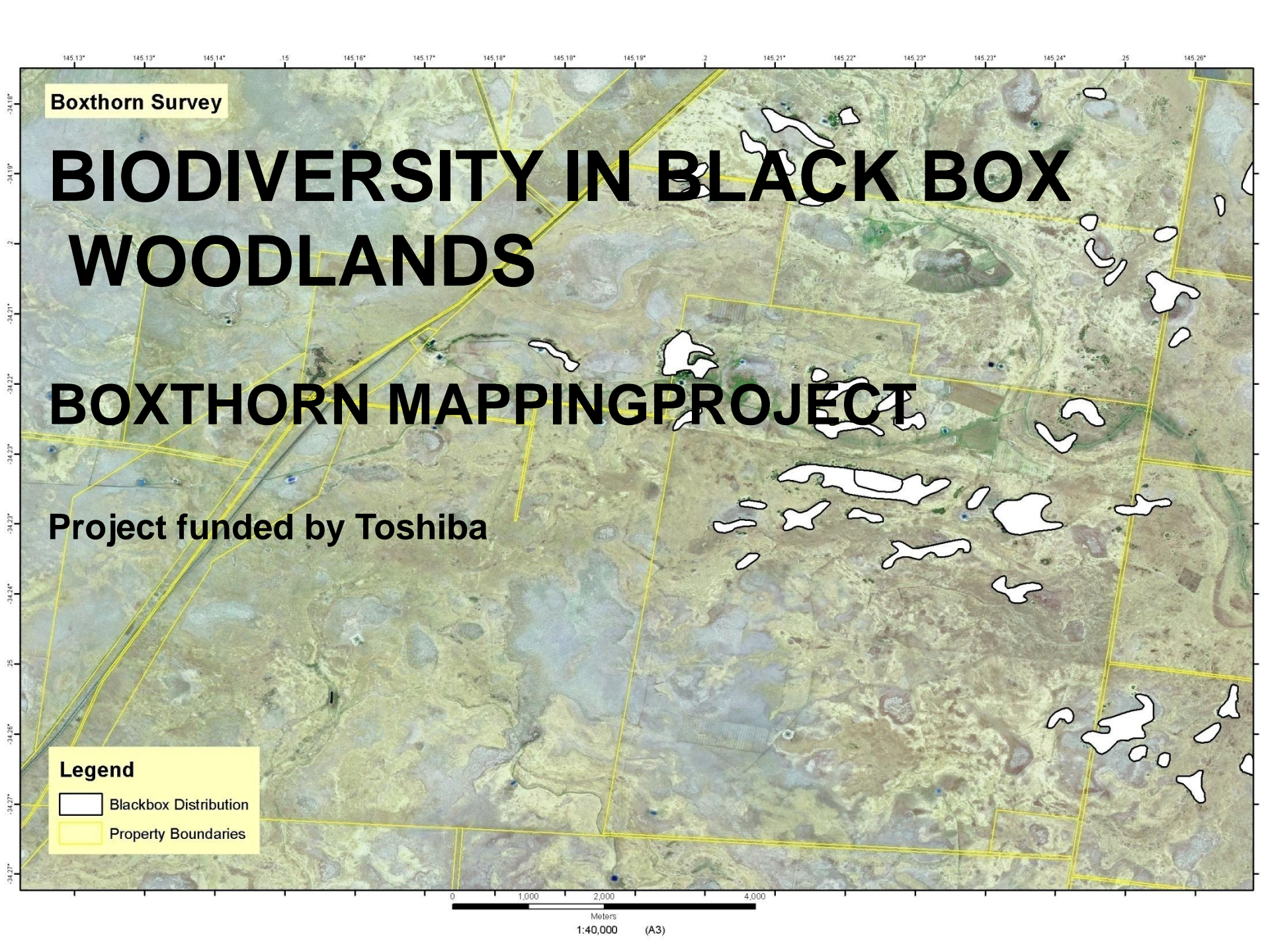
Project funded by Toshiba

Legend

-  Blackbox Distribution
-  Property Boundaries

0 1,000 2,000 4,000

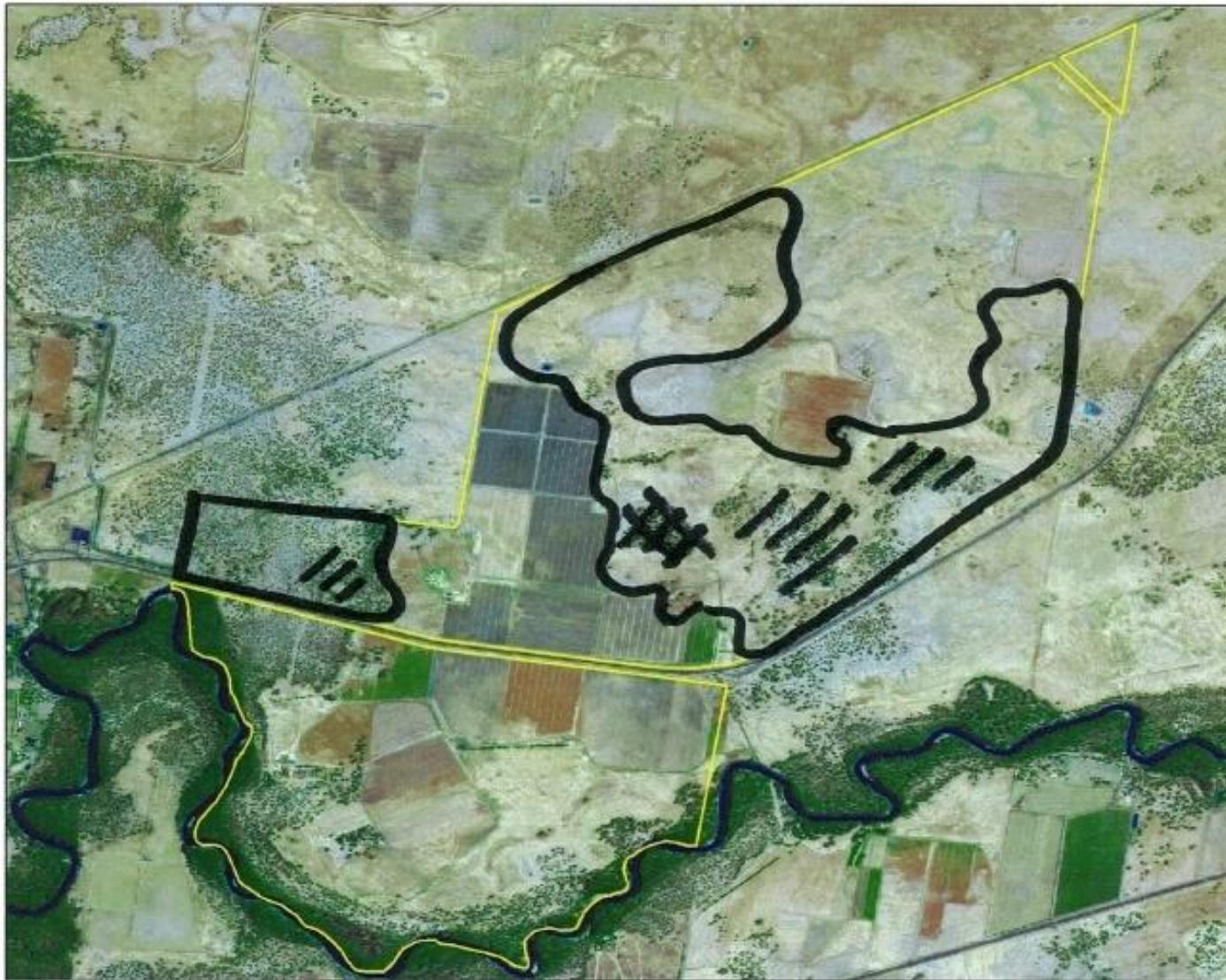
Meters
1:40,000 (A3)










Boxthorn Survey - Example



Boxthorn Density

- 1 per m² 
- 1 per 10 m² 
- 1 per ha 



LEGEND

 Property Boundary

SOURCES:
This map has been compiled from data supplied by the Office of Environment and Heritage, NSW/B based on the data supplied by the Department of Finance and Services, Panorama Ave, Bathurst NSW. Includes data as at 1/1/2006, reproduced under license from Spot Image, all rights reserved.

DISCLAIMER:
This map has been compiled from various sources and the publisher and contributors accept no responsibility for any injury, loss or damage arising from its use, or errors, or omissions therein. While care is taken to ensure a high degree of accuracy, users are invited to verify the information themselves. Department of Environment, Climate Change and Water of any map discrepancies.

PROJECTION:
Geographic Datum: GDA84
Copyright New South Wales Government. All Rights Reserved.
No part of this map may be reproduced without written permission.



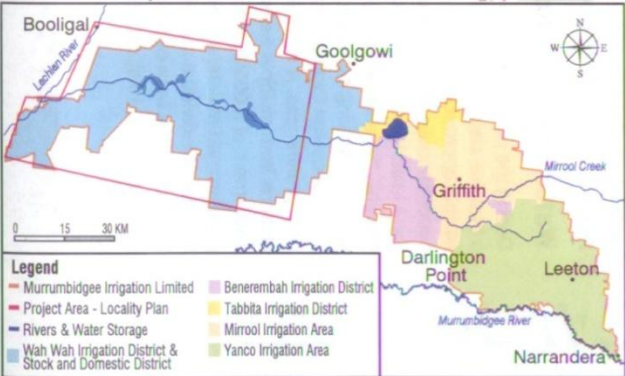
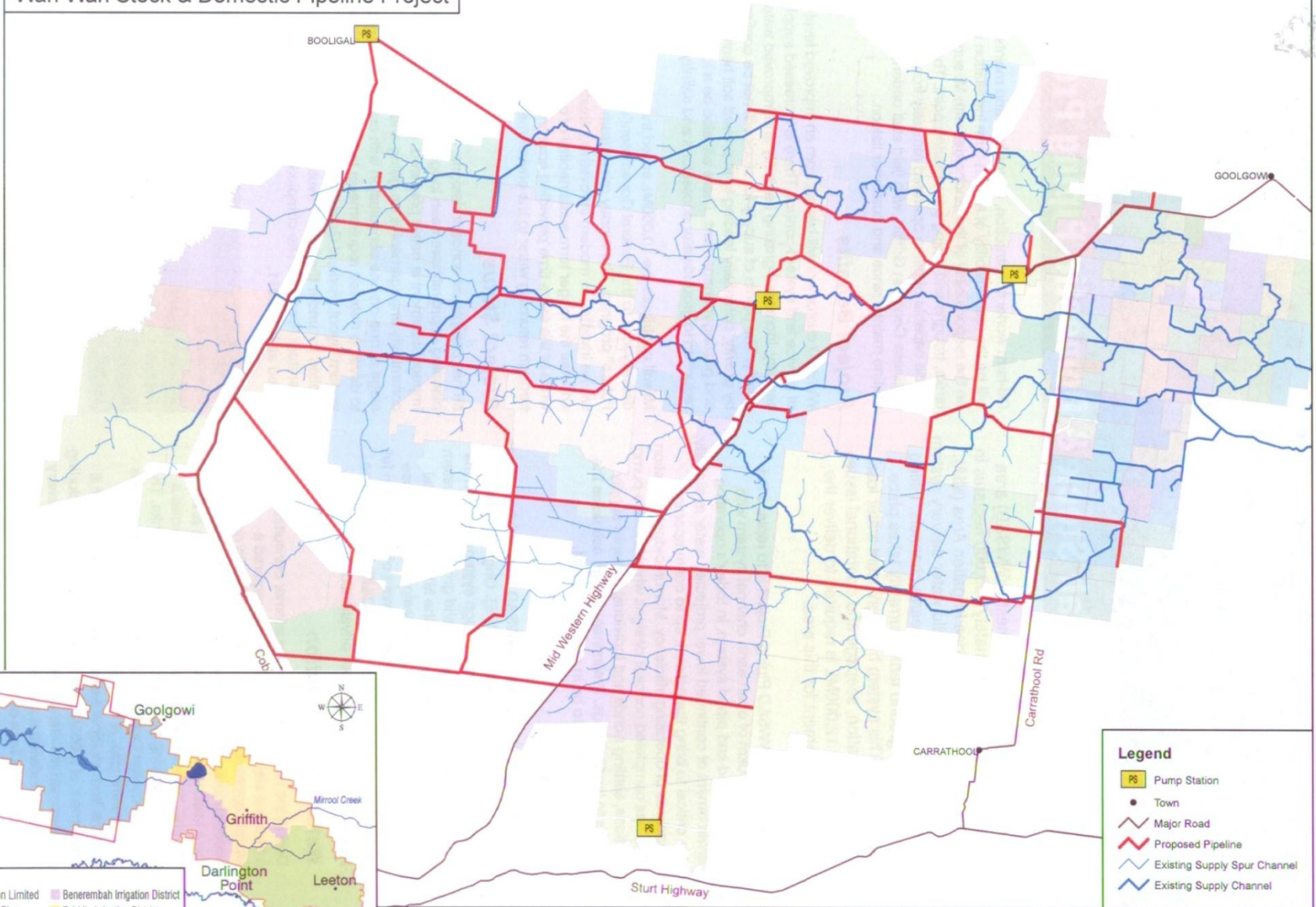
Date Prepared: May 2012
Contact Name: Wendy Monato
Contact Number: (02) 6960 1535



IMPACT ON WILDLIFE FROM REPLACING GROUND TANKS WITH PIPED S&D WATER SYSTEMS

Partnership project with Murrumbidgee CMA and Wah Wah Water Users Association

Wah Wah Stock & Domestic Pipeline Project



Legend

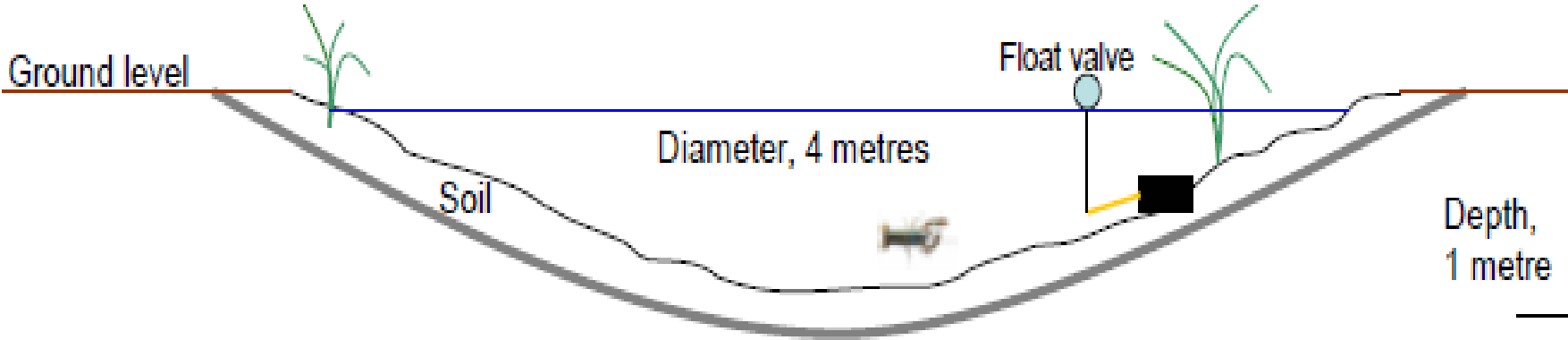
- PS Pump Station
- Town
- Major Road
- Proposed Pipeline
- Existing Supply Spur Channel
- Existing Supply Channel

Legend

- Murrumbidgee Irrigation Limited
- Project Area - Locality Plan
- Rivers & Water Storage
- Wah Wah Irrigation District & Stock and Domestic District
- Benerambah Irrigation District
- Tabbita Irrigation District
- Mirrool Irrigation Area
- Yanco Irrigation Area



FARM WILDLIFE DAM



RIVERINA BIOREGION GRAZED NATIVE VEGETATION PROJECT

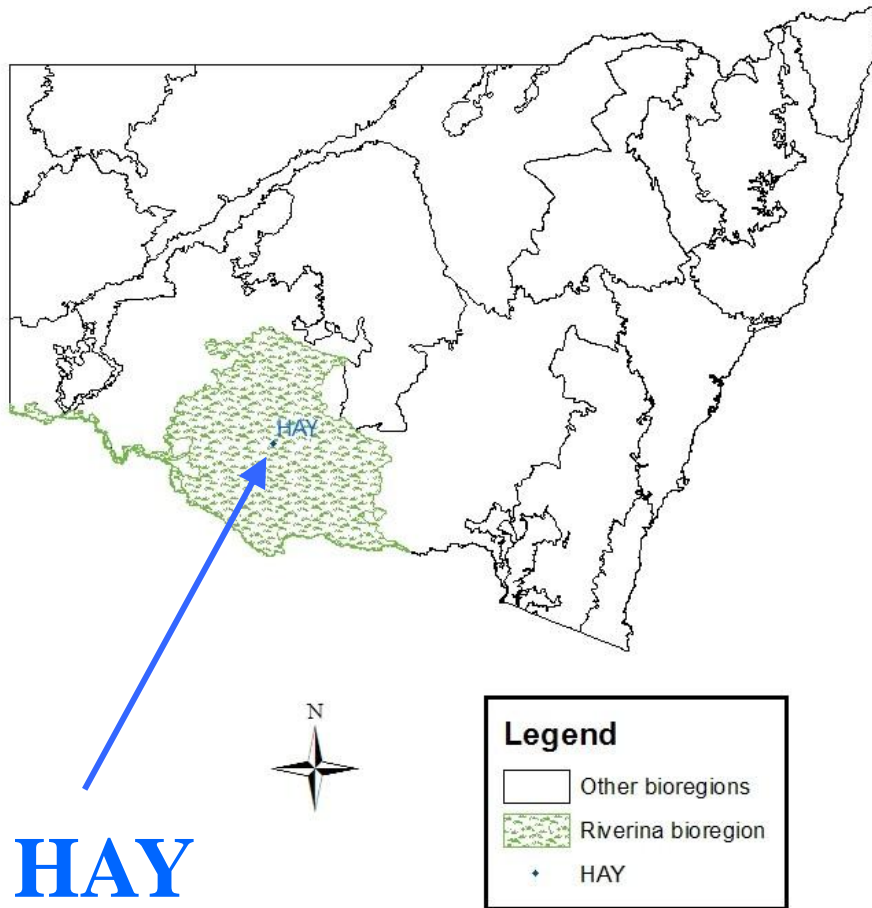
Project funded by Woolworths



PROJECT ACTIVITIES:

- Contract a scientist to undertake monitoring of all RAP sites and collate and analyse previously-collected RAP data
- Research and assess other knowledge relating to long-term vegetation status
- Review data implications and draft grazing management recommendations
- Identify sites and draft recommendations for management and protection of vegetation reference areas
- Prepare discussion papers and convene forums to utilise local knowledge, raise awareness and develop further recommendations

Riverina Bioregion Rangeland Assessment Program (RAP)



- 47 RAP sites
- Assessed annually, 1991-2003
- Currently no agency support
- Standard techniques for ;
 - Bush density
 - Groundcover
 - Pasture biomass
 - Pasture composition
 - No of species
 - Frequency

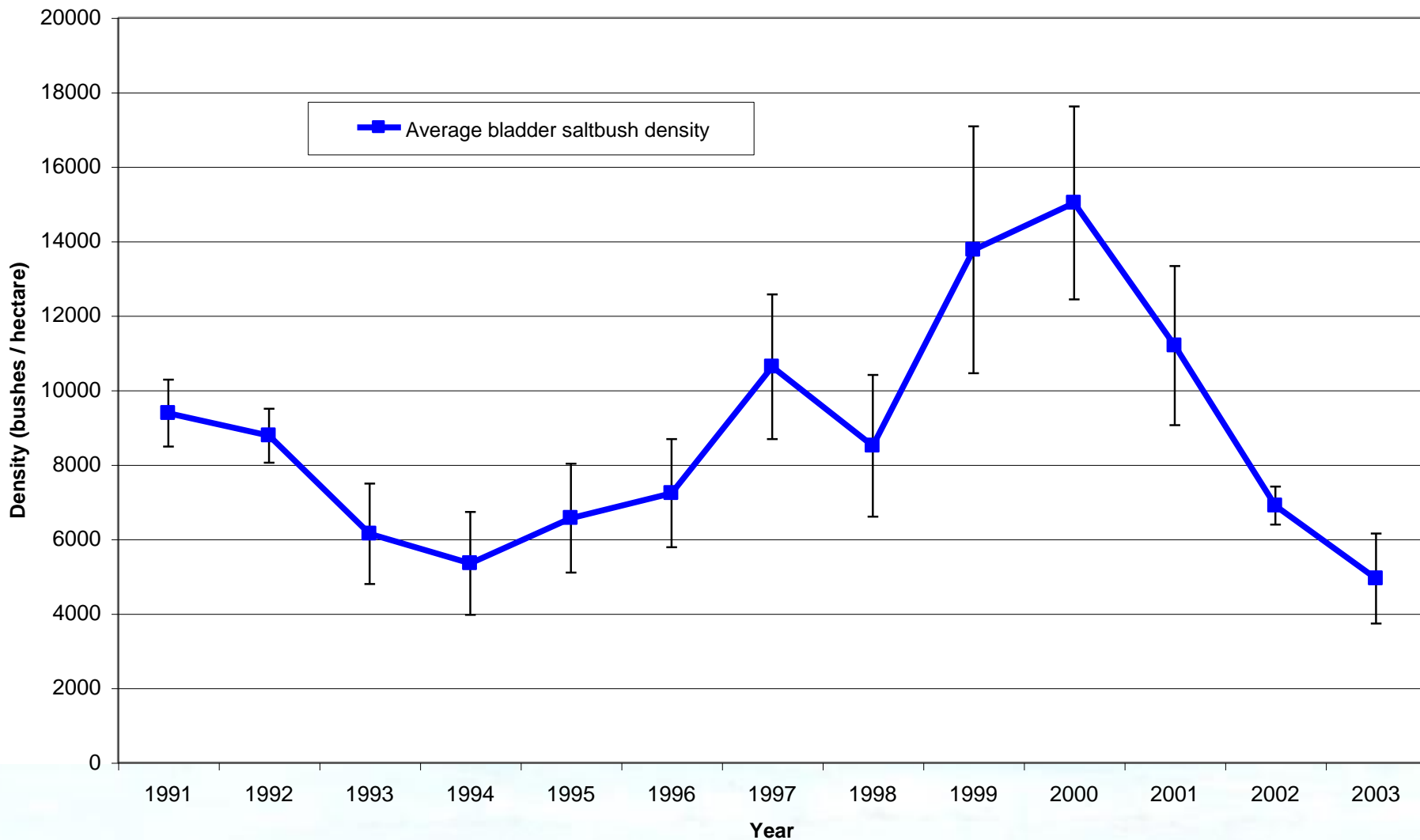
Riverina Bioregion RAP site locations



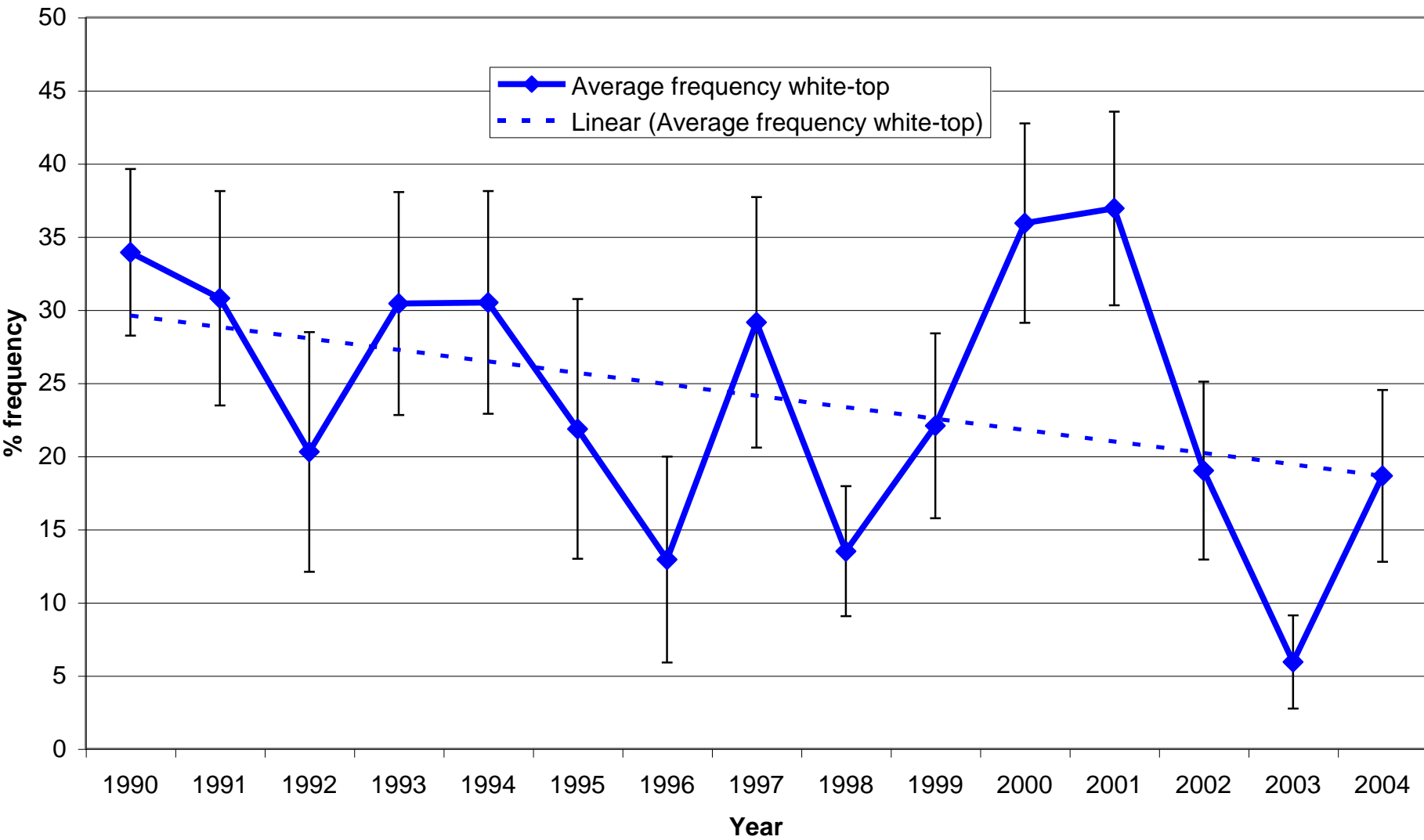




RAP data - Perennial Saltbush Density



RAP data - Perennial grass (White-top) density



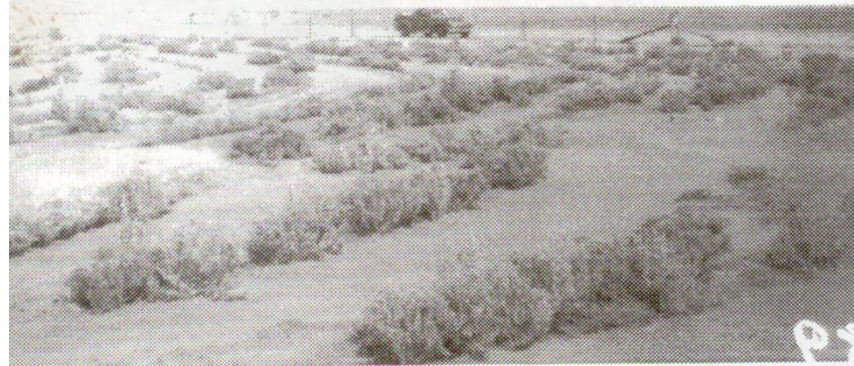
PROJECT ACTIVITIES

Maintenance of
historical
vegetation
exclosures such as
Tchelery
Experimental Area



1952. Contour
furfrowing after
initial treatment

1954. Same general
area as above.
Colonised by annual
& penennial sabbushes.

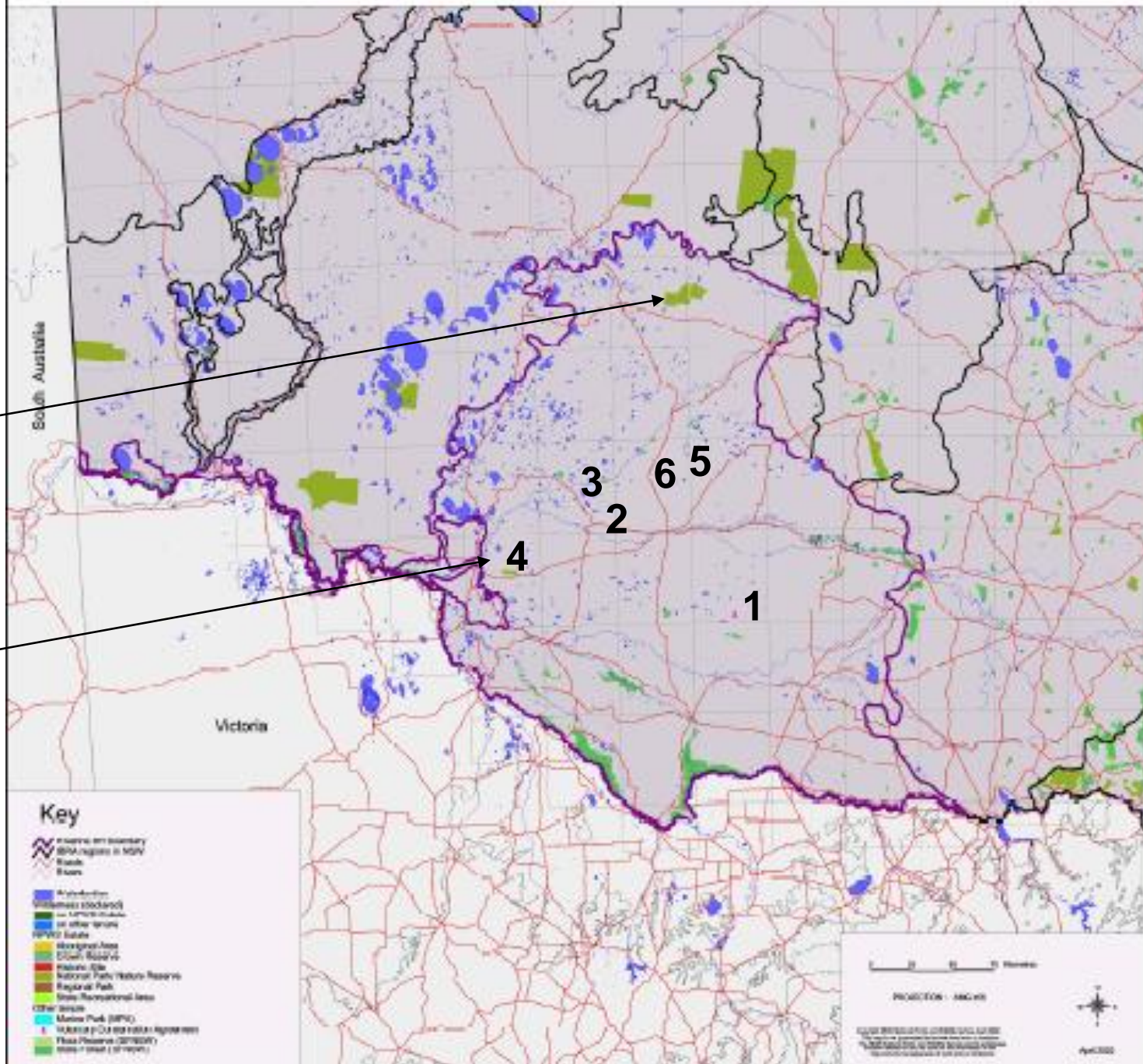


1957. Reclamation
by contour furrows.
Initial treatment in
1952.

Collaboration with National Parks and Wildlife Service

WILLANDRA NATIONAL PARK

NEW NATIONAL PARKS



PROJECT ACTIVITIES

Community involvement in vegetation monitoring

